

\$244,900 - A2, 5300 Vista Trail, Blackfalds

MLS® #A2224116

\$244,900

2 Bedroom, 2.00 Bathroom, 1,034 sqft

Residential on 0.02 Acres

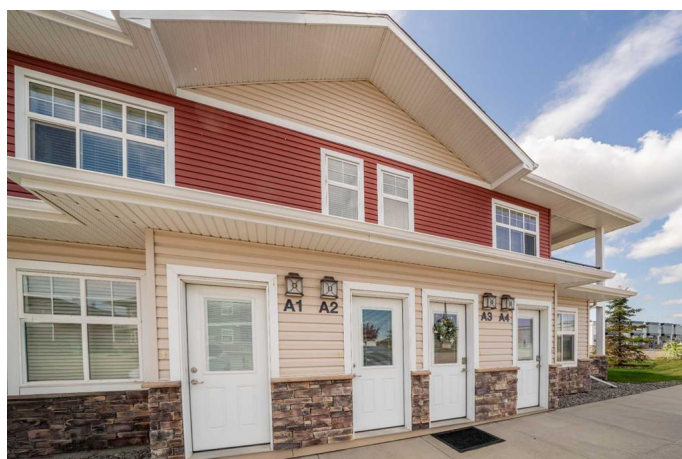
Valley Ridge, Blackfalds, Alberta

UPPER LEVEL CONDO AT VALLEY CROSSING - Beautifully maintained NORTH FACING condo features an OPEN CONCEPT and EASY TO KEEP CLEAN dark cabinetry and beautiful brown laminate flooring. This development borders the popular Abbey Center, a park, walking trails and has convenient entry to Highway 2 and Highway 2A. Inside you'll find 2 BEDROOMS & 2 BATHROOMS. The primary bathroom includes an UPGRADED WALK-IN SHOWER with glass doors. There is also IN-SUITE LAUNDRY, LARGE COVERED DECK that faces the west and 2 assigned powered parking stalls right outside your door plus lots of visitor stalls. The kitchen has ample counter space with LARGE PENINSULA and cabinets that have been upgraded to soft-closures and has stainless steel appliances. This condo is very well ran and CONDO FEES are LOW at \$227.03.

Built in 2015

Essential Information

| | |
|----------------|-----------|
| MLS® # | A2224116 |
| Price | \$244,900 |
| Bedrooms | 2 |
| Bathrooms | 2.00 |
| Full Baths | 2 |
| Square Footage | 1,034 |
| Acres | 0.02 |



| | |
|------------|-------------------|
| Year Built | 2015 |
| Type | Residential |
| Sub-Type | Apartment |
| Style | Single Level Unit |
| Status | Active |

Community Information

| | |
|-------------|----------------------|
| Address | A2, 5300 Vista Trail |
| Subdivision | Valley Ridge |
| City | Blackfalds |
| County | Lacombe County |
| Province | Alberta |
| Postal Code | T4M 0L8 |

Amenities

| | |
|----------------|--|
| Amenities | None |
| Parking Spaces | 2 |
| Parking | Stall, Assigned, Paved, Parking Lot, Plug-In |

Interior

| | |
|-------------------|--|
| Interior Features | Laminate Counters, Open Floorplan, Vinyl Windows |
| Appliances | Dishwasher, Microwave Hood Fan, Refrigerator, Stove(s), Washer/Dryer Stacked |
| Heating | Forced Air, Natural Gas |
| Cooling | None |
| # of Stories | 2 |
| Basement | None |

Exterior

| | |
|-------------------|---------------------------------|
| Exterior Features | None |
| Roof | Asphalt Shingle |
| Construction | Stone, Vinyl Siding, Wood Frame |
| Foundation | Poured Concrete |

Additional Information

| | |
|----------------|----------------|
| Date Listed | May 23rd, 2025 |
| Days on Market | 45 |
| Zoning | R3 |

Listing Details

Listing Office

Royal LePage Network Realty Corp.

Data is supplied by Pillar 9â„¢ MLSÂ® System. Pillar 9â„¢ is the owner of the copyright in its MLSÂ® System. Data is deemed reliable but is not guaranteed accurate by Pillar 9â„¢. The trademarks MLSÂ®, Multiple Listing ServiceÂ® and the associated logos are owned by The Canadian Real Estate Association (CREA) and identify the quality of services provided by real estate professionals who are members of CREA. Used under license.