

\$2,399,900 - 1131 Lansdowne Avenue Sw, Calgary

MLS® #A2231995

\$2,399,900

4 Bedroom, 4.00 Bathroom, 3,057 sqft

Residential on 0.14 Acres

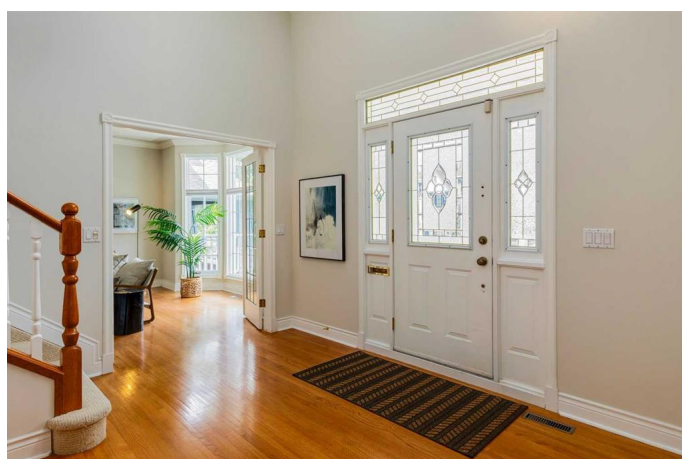
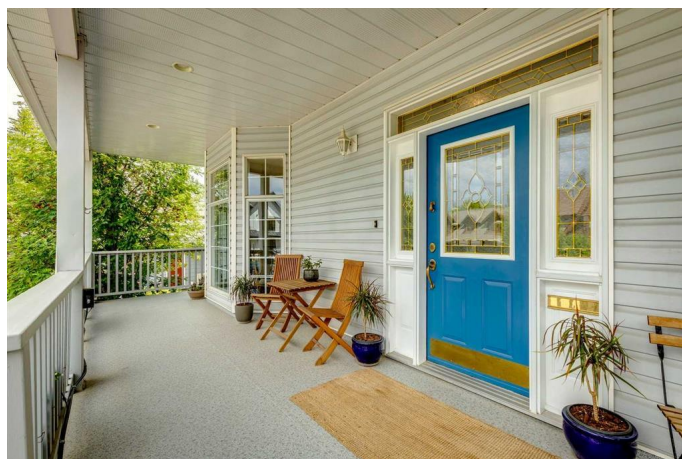
Elbow Park, Calgary, Alberta

Backing the Britannia Ridge with a beautiful private lot in desirable Riverdale/Lansdowne neighborhood. This 2 story 4 bedroom home offers a fabulous layout for family life + entertaining. The curb appeal with front veranda is a welcoming approach to the home. Enter to a two story entrance with loads of light, 9 foot ceilings, hardwood flooring + neutral decor. Immediately off the entrance is a main floor office/flex room. The living room (with gas fireplace) + dining rooms are the perfect size for gatherings. Very spacious kitchen with loads of cabinetry + counter space as well as pantry + roomy breakfast nook which overlooks the beautiful backyard. The family room is off the kitchen + offers a wood burning fireplace with dumb waiter to the garage for the firewood storage. Four large bedrooms upstairs as well as a laundry room; the primary bedroom is very large with sitting area, 4 piece ensuite bath + walk in closet + a lovely view. The lower level is developed with a family room, full bath, huge storage room + 4 car tandem garage. Steps to Sandy Beach, the river + pathway system + walking distance to excellent schools, the shops of Britannia, Parks + Glencoe.

Built in 1993

Essential Information

MLS® #	A2231995
Price	\$2,399,900



Bedrooms	4
Bathrooms	4.00
Full Baths	4
Square Footage	3,057
Acres	0.14
Year Built	1993
Type	Residential
Sub-Type	Detached
Style	2 Storey
Status	Active

Community Information

Address	1131 Lansdowne Avenue Sw
Subdivision	Elbow Park
City	Calgary
County	Calgary
Province	Alberta
Postal Code	T2S 1A4

Amenities

Parking Spaces	4
Parking	Quad or More Attached

Interior

Interior Features	Breakfast Bar, Built-in Features, Granite Counters, High Ceilings, Kitchen Island, Pantry, Vaulted Ceiling(s), Bookcases
Appliances	Dishwasher, Dryer, Garage Control(s), Gas Cooktop, Refrigerator, Washer, Window Coverings, Double Oven
Heating	Forced Air, Natural Gas
Cooling	None
Fireplace	Yes
# of Fireplaces	2
Fireplaces	Gas, Mantle, Wood Burning, Raised Hearth, Stone
Has Basement	Yes
Basement	Finished, Full

Exterior

Exterior Features	Private Yard, Awning(s)
Lot Description	Back Yard, Backs on to Park/Green Space, No Neighbours Behind,

	Private, Rectangular Lot
Roof	Wood
Construction	Vinyl Siding, Wood Frame
Foundation	Poured Concrete

Additional Information

Date Listed	June 19th, 2025
Days on Market	36
Zoning	R-CG

Listing Details

Listing Office	Real Estate Professionals Inc.
----------------	--------------------------------

Data is supplied by Pillar 9â„¢ MLS® System. Pillar 9â„¢ is the owner of the copyright in its MLS® System. Data is deemed reliable but is not guaranteed accurate by Pillar 9â„¢. The trademarks MLS®, Multiple Listing Service® and the associated logos are owned by The Canadian Real Estate Association (CREA) and identify the quality of services provided by real estate professionals who are members of CREA. Used under license.